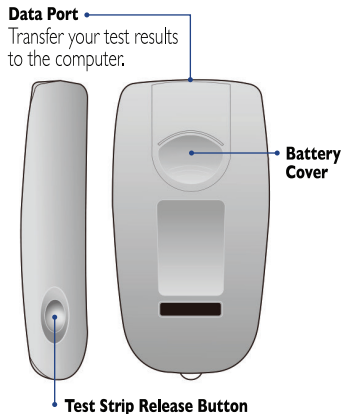
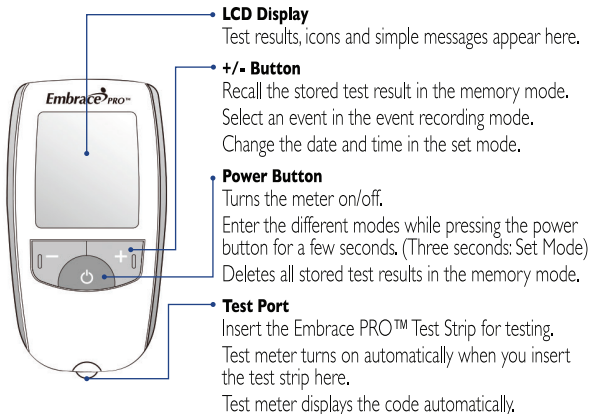


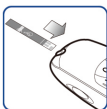
## Quick Reference Guide

Note: Please read through your Meter User Manual before using this guide.



## Quick Reference Guide

Note: Please read through your Meter User Manual before using this guide.



### 1 Insert Embrace PRO™ Test Strip

Insert Embrace PRO™ Test Strip into the test port and the meter will turn on automatically. The code, strip icon and blood icon will appear.



### 2 Apply the Blood Sample

Apply a round drop of blood on the yellow side-edge of test strip. You will see a drop of blood fill the confirmation window of test strip. Hold the blood drop to the yellow side-edge of test strip until blood has completely filled the confirmation window before your meter beeps. Your meter initiates a count-down.



### 3 Results Appear in Five Seconds

Once the meter completes the count down from "5" to "1", your test result will appear on the meter display. If you remove test strip immediately only the test result (not the event record) will automatically save in the meter memory. Recording the event with each reading may help with an effective diabetes management. To enter the event record mode, you may press +/- button on meter before removing the test strip from the meter. To remove test strip, press the test strip release button on the side of the meter.

Manufactured for:



#### Questions or comments?

Call us toll-free at 1-877-979-5454  
Monday thru Friday, 9AM - 5PM EST  
or visit our website.

[www.omnishealth.com](http://www.omnishealth.com)

 /embracemeter

 @embracemeter

Embrace PRO™ is a trademark of Omnis Health.



A812ED804  
08/2022